



## Satin Brass Range

### All In One - Passage & Privacy Options

SS Bearing Race Mechanism

63mm Backplate for Retro Fitting Into Existing Doors

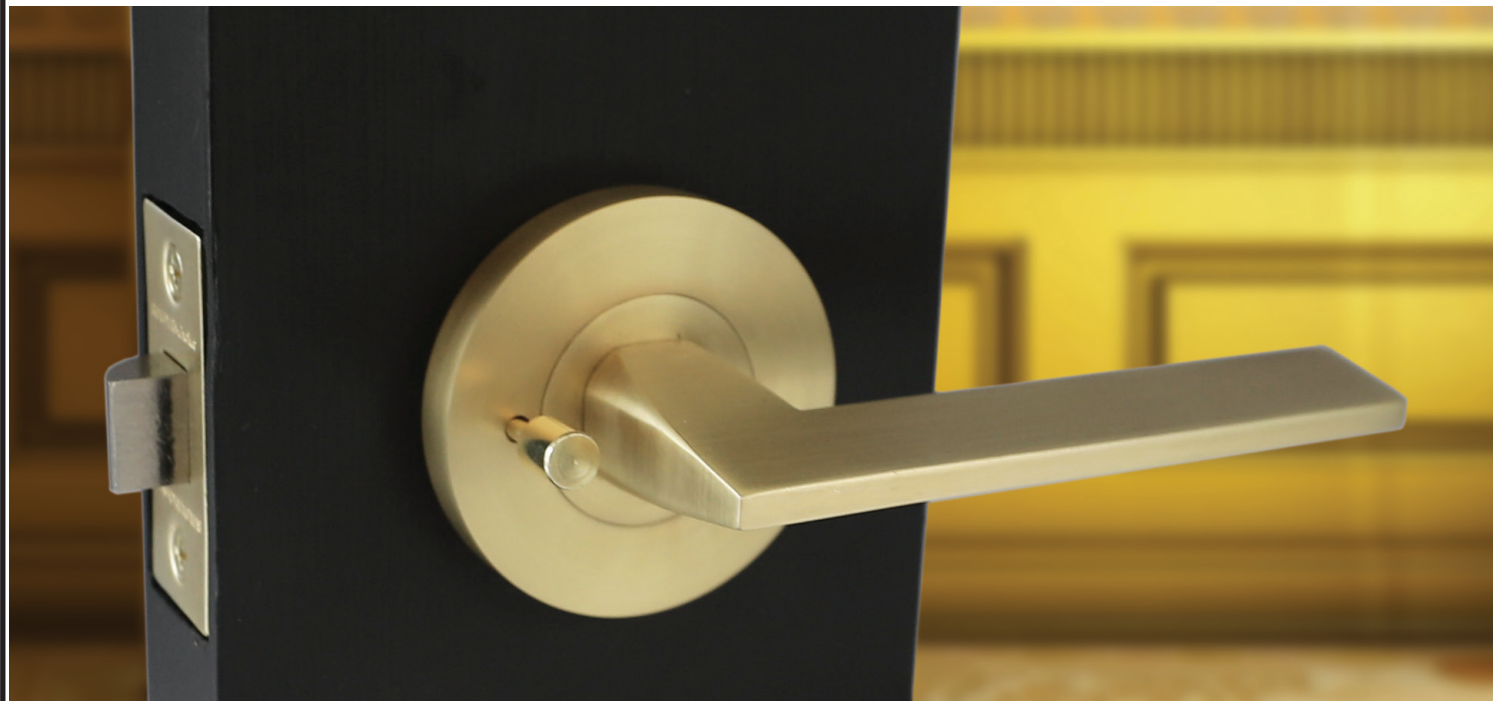
Back to Back SS Screw Thru Fixing



INTEGRATED  
PRIVACY OPTION



304 SS BALL BEARING  
RACE MECHANISM



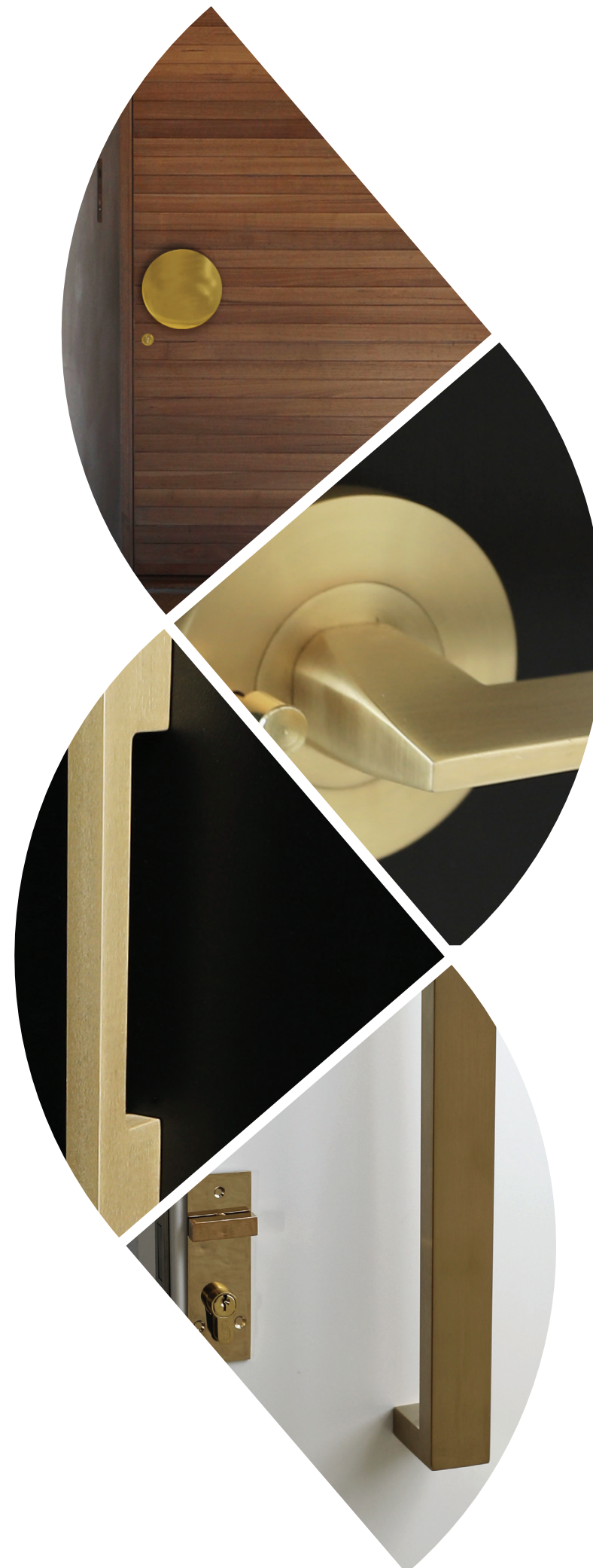
w. [www.austyle.com.au](http://www.austyle.com.au)  
e: [info@austyle.com.au](mailto:info@austyle.com.au)  
p: 03 9553 3559

# SB



austyle  
architectural  
hardware

2021



# SB

Satin Brass Range




Satin Brass Finish



**93580 Linear Lever Set.**  
>SS Ball Bearing Mechanism.  
>ALL IN ONE - Passage & Privacy options included.  
>63mm backplates -Ideal for retro fitting into existing doors.

93733 **Escutcheon** Cover 52mm  
99209 **Entrance Lock** 65mm/85mm  
19144 **Double Cylinder** 65mm [PVD]



**Tapered Lever Set**  
All In One - Passage and Privacy (pictured)  
93585

**93585 Tapered Lever Set**  
SS Ball Bearing Mechanism  
ALL IN ONE - Passage & Privacy options included  
63mm backplates -Ideal for retro fitting into existing doors



**Sliding Door Flush Pull**  
93749  
Flush Pull 150x50mm.

**Sliding Door Edge Pull**  
94455 - 80x25mm.



**Bathroom Doors**  
99040  
Recessed bathroom privacy snibs 40mm diam (use with 19033 latch)



**Door Stop**  
93080  
Floor Mounted Door Stop 45mm



**Hinges**


95108  
100x75x2.5mm  
Fixed Pin

95109  
100x100x2.5mm  
Fixed Pin



**Entrance Option**

93580 Lever Handle  
93733 Escutcheon Cover 52mm  
99209 Entrance Lock 65mm/85mm  
19144 Double Cylinder 65mm [PVD]



**Blade Entry Pull Handle**

93936  
Blade Pull Handle  
450mm (40x15mm)



**Square Entry Pull Handle**

93995  
450mm (20x40mm)

93996  
600mm (20x40mm)

93736  
Escutcheon Snib  
145x40mm

19217  
myLOCK  
Entrance Roller Lock



**Tube Entry Pull Handle**

93866  
25mm Tube  
450mm

93868  
32mm Tube  
600mm



**Tapered Offset Entry Pull Handle**

93928  
450mm Tapered Offset Pull

93929  
600mm Tapered Offset Pull



**Circular Entry Pull Handle**

93994  
230mm Diameter Round Pull

93702  
Escutcheon



**Cabinet Pull Handle**

98702  
12x12mmx236mm