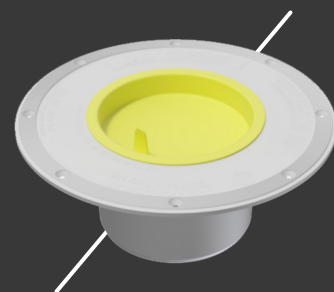




WONDERCAP



WC100RPF

INSTALLING THE WONDERCAP RETRO PUDDLE FLANGE

Concrete / Cement Sheet / Wooden Floors Installation Details

Renovating Bathrooms on Existing Concrete / Cement Sheet / Wooden Floors / Installation Procedures

Set outs for Wondercap Retro Kits:

Allow 200mm diameter for the outside edge of the puddle flange. Rebate 3mm to the outer edge of the puddle flange so the Wondercap Retro Kit will fit flush with the floor. An easy guide to marking out the area for the 3mm rebate is to just turn the puddle flange upside down and mark around the outer edge of the puddle flange.

Place the Retro Puddle Flange into the rebate and screw down so the puddle flange sits flush with the floor.

*Note: Green plugs and countersunk screws work best.

Pro Tip:

Prior to waterproofing always check the area around the drains. If they are rough, bumpy, or uneven it is always good practice to fill around the puddle flange area to reduce the changes of the waterproofing membrane holding water. Use the additive Bondcrete with cement to trowel evenly towards the drains. Always read the manufacturers recommendations prior to starting.

Pro Tip:

Demo of tile floors are always messy and leads to broken tiles and bedding in the drains. The base & cap can be inserted into open drains to prevent the construction rubbish from entering the drains.

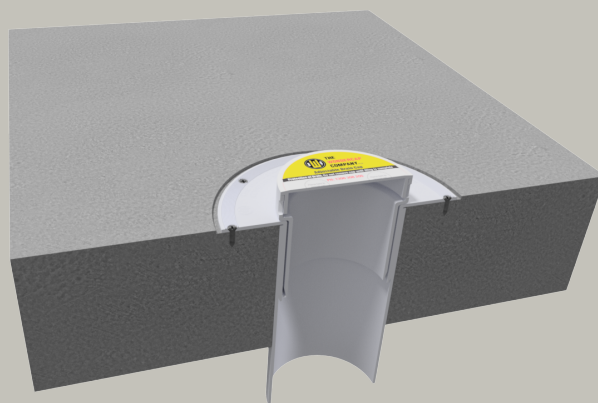
Installation of the Wondercap Retro Kit For New Installations

Step 1:

Prepare the floors by checking that the existing floor is smooth around the risers and has no high points to impede the puddle flange from sitting flush with the floor. Cut the pipe riser down at least 3mm below the finished floor. Rebate the 3mm for the puddle flange. Clean the area for the puddle flange thoroughly prior to gluing. Solvent clean and glue the puddle flange into position – always be aware that the internal dropper of the puddle flange could be very tight to install so be prepared to place additional weight when pushing into position.

Step 2:

Mark out a 200mm diameter area from the center of the riser for the 3mm rebate so the puddle flange sits flush with the floor. Screw the puddle flange down into position - the 8-hole puddle flange will firmly secure to the concrete floor.



Reduce your waterproofing problems by simply rebating the outer flange into the subfloor prior to waterproofing.

For more information visit
www.wondercap.com.au