

*home*  
**LOCKING &  
DOOR HARDWARE**  
SOLUTIONS





GET THE LOOK

# What's your Style?

When building, renovating or designing your home or accommodation interior, the overall intent is to create a unique experience. Whether it be your residential dwelling or accommodation, the space should evoke a feeling of comfort; an oasis that you can retreat to.



*Neutral Luxe*

Forecasted to be popular in 2021 with carefully curated high end quality pieces and materials; the effortless sophistication of neutral luxe is perfect for any interior. The neutral colour palette paired with luxurious materials such as marble, sculptural ornaments and plush furniture strikes a balance of refined and homely warmth.



*Earthy Organic*

Sustainable, organic elements that connect the indoor space with the outdoor will remain a key trend in 2021. Designers focus on sustainable design, with prominence to ethically made items and refurbished pieces. Forecasted trends include: natural fabrics, renewable resources, indoor plants, raw materials and subtle colours that evoke emotion. Colour palettes feature: Warm beiges, lush greens, warm yellow to compliment.



*Modern Industrial*

Old world charm meets industrial chic, this is a style that incorporates the old with the new. Inspired by raw vintage pieces, industrial open planned spaces, and modern clean lines. Merging turn-of-the-century elements with urban living. With a key focus on architectural materials such as exposed brick, high beamed ceilings, steel/metal, and concrete.



LEGEND

Select the right furniture for your door.



Entrance

External entry doors you would like to lock: Front Doors, Back Doors and Garage Doors.



Privacy Set

Interior doors you would like to lock: Bathroom, Study / Office and Bedrooms.



Passage Set

Interior doors you do not want to lock: Laundry, Living Room and Bedrooms.



Dummy Lever

To use on doors that are non operational: Closets and Wardrobes.

Finishes guide

BLK	Black
BRN	Brown
CP	Chrome Plate
EVB	Everbrass
GSP	Gold
LSC	Brushed Satin Chrome
MAG	Magnolia
MBK	Matt Black
PB	Polished Brass
PRM	Primrose
PSS	Polished Stainless Steel
SC	Satin Chrome
SIL	Silver
SP	Satin Chrome Pearl
SSS	Stainless Steel
STB	Stone Beige
WH	White
WHB	White Birch

Additional information



**QUICK INSTALL**  
Quick and easy to install for your next DIY home project.



**HIRE A LOCKIE**  
Professional installation required.  
Visit our website to find a Locksmith near you!  
[www.lockweb.com.au/en/where-to-buy](http://www.lockweb.com.au/en/where-to-buy)







For over 75 years, our guiding principle is  
and will always be: To take the worry out  
of protecting what is valuable to you.

**Lockwood:** *no worries®*

# Contents

**NERO® COLLECTION**

001 Double Cylinder Deadlatch	8
Symmetry® 7107 Double Cylinder Deadbolt	9
Nexion® Mechanical Entrance Lockset	10
143 Entrance Handle	11
Paradigm® 005 Double Cylinder Deadbolt	11
100 Nightlatch	12
Velocity® Large Rose Series Element Lever	14
Velocity® Small Rose Series Leversets	16
Symmetry® -Element™ Leverset	18
Cavity Sliding Door Lock	19
FP2 Flush Pull	19

**ENTRANCE SOLUTIONS**

Velocity® Entrance Lockset	20
Nexion® Mechanical Entrance Lockset	21
Paradigm® 005 Double Cylinder Deadbolt	22
Symmetry Deadbolts	23
001 Double Cylinder Deadlatch	24
Deadlocks	24
Paradigm® Pull Handle Lockset	25
Entrance Handles	26

**INTERIOR SOLUTIONS**

Velocity® Large Rose Series Element Lever	28
Velocity® Small Rose Series Leversets	28
Symmetry Door Handle Range	29

**SLIDING DOOR SOLUTIONS**

Outland Sliding Door Track	30
Cavity Sliding Door Locks	31
Patio Sliding Door Lock	32
Hinged & Sliding Security Screen Door Locks	33
Hydraulic Screen Door Closer	34

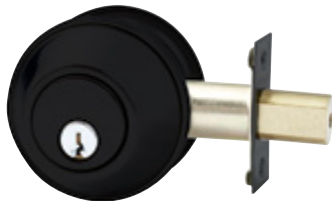




## Symmetry® 7107 Double Cylinder Deadbolt

### Features

- Entry-level deadbolt offers standard security
- Suits left or right hand opening doors
- Solid brass bolt with 25mm projection
- Hardened insert in locking bolt
- Double cylinder configuration only available in matt black finish
- Suited to compliment Lockwood Symmetry knob and lever locksets



7107MBKDP  
Exterior View



7107MBKDP  
Interior View

## 001 Double Cylinder Deadlatch

### Features

- Conforms to the security and durability requirements of Australian Standard AS4145.2-2008 | S.7D8C6
- Cut-resistant Stainless Steel Bolt
- 11 concealed anchorage points and a door frame strengthener that combine to offer high security protection
- Hold back function that allows you to use the door in passage mode
- Patented LockAlert® and SafetyRelease™ functions



001-1K1MBK  
Interior View



Exterior View







## Nexion® Mechanical Entrance Lockset

### Features

- SafetyRelease™ automatically unlocks the inside handle upon entry to minimise the risk of being locked in
- LockAlert® indicator shows lock status at a glance
- Three modes of security: Secure, Safety and Passage mode provides excellent security without compromising convenience
- Designed to be keyed to builder's key systems as well as keyed alike to other Lockwood door locks
- Conforms to Australian Standard AS4145.2-2008 S<sub>1</sub>7D8C5K6



**NXV12/1L3MBK**  
Exterior View

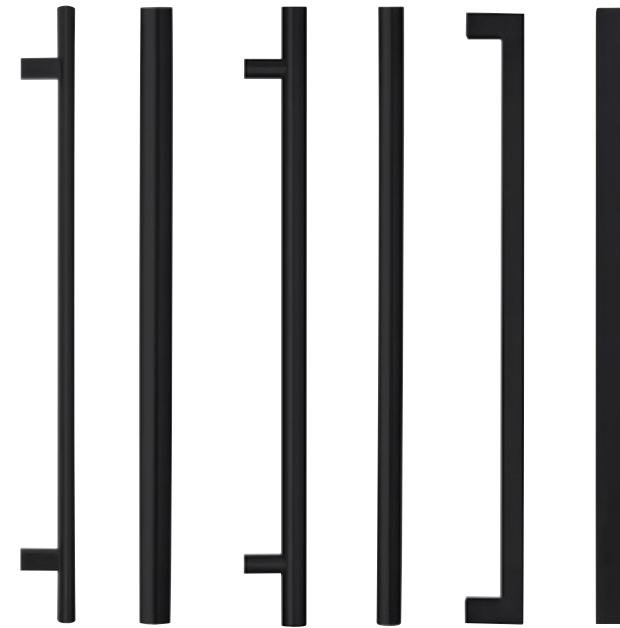


**NXV12/1L3MBK**  
Interior View

## Entrance Handles

### Features

- Constructed of 304 grade stainless steel
- Suitable for use in both internal and external environments
- Disabled Accessible: AS1428.1 Compliant
- Supplied with spigots to suit 10-12mm thick glass doors as well as aluminium and timber doors up to 50mm thick



**141X300MBK**  
**141X600MBK**

**142X300MBK**  
**142X450MBK**

**143X450MBK**  
**143X600MBK**



**145X225MBK**

**146X450MBK**  
**146X600MBK**



## Paradigm® 005 Double Cylinder Deadbolt

### Features

- Simple to install, retrofits existing deadbolt door preparations
- SafetyRelease™ automatically unlocks internal turn knob upon key entry from outside
- LockAlert® indicator shows lock status at a glance. The lockset can operate in three modes: Secure Mode, Safety Mode and Passage Mode
- DualSelect® function - turn the key for safety mode, turn the key further to select secure mode
- Conforms to the security and durability requirements of Australian Standard AS4145.2-2008 | SL8D8C6K5



**005/B1MBKDP**  
Round Rose  
Exterior View



**005/B1MBKDP**  
Round Rose  
Interior View



**005/B2MBKDP**  
Square Rose  
Exterior View



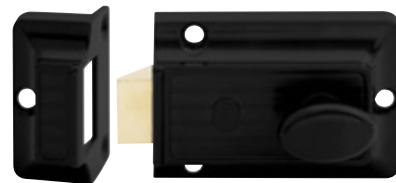
**005/B2MBKDP**  
Square Rose  
Interior View



## 100 Nightlatch

### Features

- Opened by key from outside and by turn knob inside
- Bolt may be held back by turning knob in clockwise direction



Interior View



Exterior View

### Keying

- Supplied individually keyed with two keys per lock
- 78,000 key combinations
- Key blank KB2015P

### Restricted Special Keying

Lockwood locks can be keyed to a number of controlled and/or specially keyed systems. These range from legally protected keys to protect against unauthorised duplication, which can also include specially designed key systems such as master key systems, which allow for different levels of mechanical access control.

Please refer to Lockwood Keying Catalogue or contact your local sales office or customer service for specific information.







## Velocity® Large Rose Series Leversets

The Large Rose of 63mm is the ideal size for replacing existing handles, and covering paint lines on doors.



Round Rose Passage Set  
**VEL1/L3MBK**  
63mm Round Rose



Round Rose Privacy Set  
**VEL2/L3MBK**  
63mm Round Rose



Round Rose Dummy Handle  
**VEL3/L3MBK**  
63mm Round Rose



Square Rose Passage Set  
**VEL1/37MBK**  
65mm Square Rose



Square Rose Privacy Set  
**VEL2/37MBK**  
65mm Square Rose



Square Rose Passage Set  
**VEL1/L3MBK + VES1-TRIMMBK**  
65mm Square Rose



Square Rose Privacy Set  
**VEL2/L3MBK + VES2-TRIMMBK**  
65mm Square Rose

**NOTE:** Square trims sold separately  
(VES1-TRIMMBK and VES2-TRIMMBK).

## Velocity® Series Leversets

### Features

- Velocity Large Rose Series is suitable for retrofit and common residential door preparations. The roses fit 50mm or 54mm diameter holes.
- Velocity Small Rose Series 55mm roses fit up to 45mm door preparations commonly used with mortice locks or latches.
- Velocity Small Rose Series is successfully tested up to 2 hours on fire door assemblies with the Australian Standard AS1905.1 2005 - Part 1: Fire Resistant Doorsets when used with Lockwood Synergy or Selector mortice locks
- Velocity Small Rose Series also includes range of escutcheons such as a AS1428.1 compliant turnknob, standard turnknob and privacy indicating emergency turn.

**Large Rose Dimensions** 63mm by 12.5mm - Round Rose  
65mm by 12.5mm - Square Rose

**Small Rose Dimensions** 55mm by 12.5mm - Round Rose  
58mm by 12.5mm - Square Rose

Simple twist and tighten fixing method with pre-assembled lever set allows for super easy and fast installation





# Velocity® Small Rose Series Leversets

The Small Rose is designed primarily for new installations and is available in Round Rose of 55mm or Square Rose of 58mm.



Round Rose Mortice Set  
**VSR0/L3MBK**  
 55mm Round Rose

Round Rose Passage Set  
**VSR1/L3MBK**

Round Rose Dummy Handle  
**VSR3/L3MBK**



Round Rose Privacy Set  
**VSR2/L3MBK**  
 55mm Round Rose



Round Rose Mortice Set  
**VSR0/L8MBK**  
 55mm Round Rose

Round Rose Passage Set  
**VSR1/L8MBK**

Round Rose Privacy Set  
**VSR2/L8MBK**



Round Rose Dummy Handle  
**VSR3/L8MBK**  
 55mm Round Rose



Square Rose Passage Set  
**VSR1/L3MBK + VSS1-TRIMMBK**  
 58mm Square Rose



Square Rose Privacy Set  
**VSR2/L3MBK + VSS2-TRIMMBK**  
 58mm Square Rose



Square Rose Passage Set  
**VSR1/L8MBK + VSS1-TRIMMBK**  
 58mm Square Rose



Square Rose Privacy Set  
**VSR2/L8MBK + VSS2-TRIMMBK**  
 58mm Square Rose



**NOTE:** Square trims sold separately  
 (VSS1-TRIMMBK and VSS2-TRIMMBK).



# Velocity® Small Rose Series Escutcheons



Euro Profile Cylinder Escutcheon  
**VSR5/MBK**  
 55mm Round Escutcheon



Oval Cylinder Escutcheon  
**VSR6/MBK**  
 55mm Round Escutcheon



Standard Turnknob  
**VSR7/MBK**  
 55mm Round Escutcheon



Privacy Indicating Emergency Turn  
**VSR8/MBK**  
 55mm Round Escutcheon



Disabled Accessible Turnknob  
**VSR9/MBK**  
 55mm Round Escutcheon

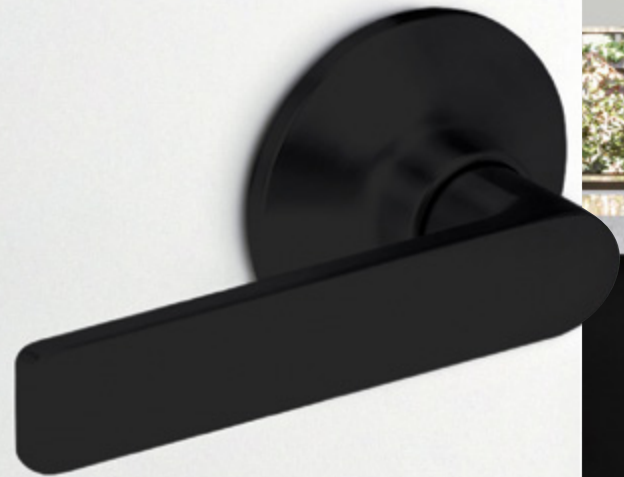


Square Rose Escutcheon Trim  
**VSS6-TRIMMBK**  
 58mm Square Escutcheon

*Designed for semi-commercial and residential applications, this range can be used with commercial mortice locks in addition to having passage, privacy and dummy leversets.*







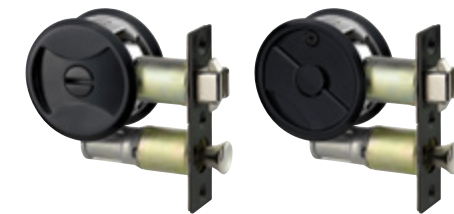
## Cavity Sliding Door Locks

### Features

- Fitted flush against the panel of the sliding door for full recess into the door cavity
- Easily fitted into a standard 54mm door preparation with a 60mm backset
- Retractable Door Pull for ease of use



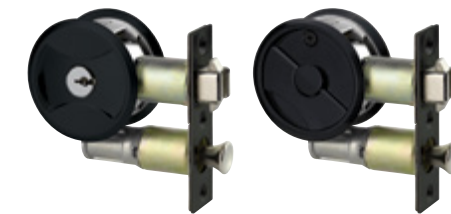
### Privacy Set



7400MBKDP  
Exterior View

7400MBKDP  
Interior View

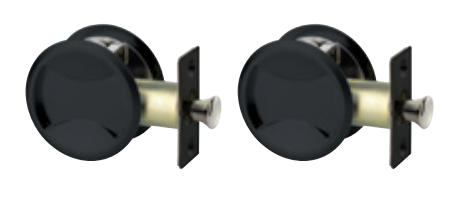
### Entrance Set



7444MBKDP  
Exterior View

7444MBKDP  
Interior View

### Passage Set



7450MBKDP  
Exterior View

7450MBKDP  
Interior View

## Symmetry® Element™ Leverset

### Features

- All products are tested in accordance with the security and durability requirements of the Australian Standards.
- Lockwood guarantees to replace Symmetry product if within five years from the proven date of purchase it tarnishes, discolours or corrodes when properly installed and subject to no more than fair wear and tear.
- The exclusive one cylinder assembly solution 'OneCyl®' has been designed for the entire Lockwood Symmetry Range, which grants the convenience of cylinder interchangeability.

### Entrance Set



7550MBK

### Passage Set



7551MBK

### Privacy Set



7552MBK

### Dummy lever



7555MBK



FP2-150MBK

## FP2 Flush Pull

### Features

- Fitted flush against the panel of the sliding door for full recess into the door cavity
- The internal edges of the flush pull handles are finished for comfort of use and to soften aesthetics.





## Velocity® Entrance Lockset

### Features

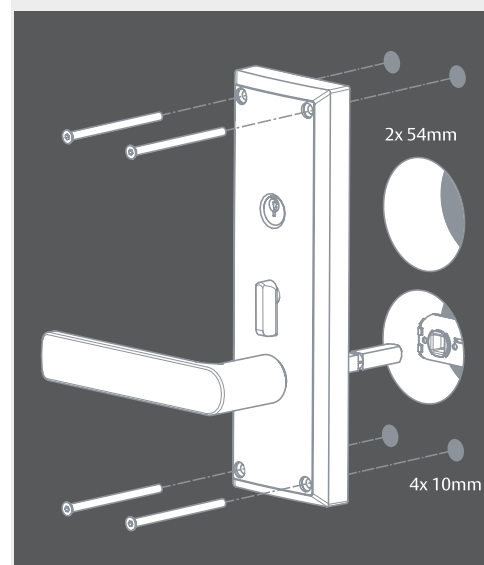
- High security latch
- Box strike with concealed crossgrain door frame strengthening screw
- Installation template included
- Can be keyed alike to other Lockwood door locks
- Retrofittable
- Complement the Velocity Door Handle range



VELO/L3SCDP  
Exterior View

VELO/L3SCDP  
Interior View

Easy installation, retrofits most common front door preparations.



## Nexion® Mechanical Entrance Lockset

### Features

- SafetyRelease™ automatically unlocks the inside handle upon entry to minimise the risk of being locked in
- Lockout Release automatically unlocks the outside handle when the inside handle or snib is operated
- Factory set for left hand opening doors, easily changed for right hand opening doors.
- Can be keyed alike with other Lockwood door locks
- Conforms to Australian Standard AS4145.2-2008 S17D8C5K6

### Finishes

SC | SP | CP



### Lever Selection



Summit® - L1



Spire® - L2



Element™ - L3



Glide™ - L4



Hakea® - 28



Saltbush® - 34





## Paradigm® 005 Double Cylinder Deadbolt

### Features

- Three function modes with DualSelect® provides perfect combination of convenience and security
- High security cut resistant stainless steel bolt
- Safety Release™ automatically unlocks internal knob upon key entry from outside
- LockAlert® indicator shows lock status at a glance

### Finishes

Round Rose

**EVB | SP | CP | SSS | LSC | MBK**

Square Rose

**SP | CP | LSC | MBK**



## Symmetry Deadbolts

### Features

- Entry-level deadbolt offers standard security
- Suits left or right hand opening doors
- Solid brass bolt with 25mm projection
- Hardened insert in locking bolt
- Available in a single or double cylinder configuration
- Suited to compliment Lockwood Key in Knob and Key in Lever locksets

### Finishes

Double Cylinder

**EVB | PSS | SSS**

Single Cylinder

**PB | PSS | SC | SSS**

\* Nero Collection 7107 Double Cylinder Deadbolt available in Matt black. Refer to page 9.



### Double Cylinder



**7107PSS**  
Exterior View



**7107PSS**  
Interior View

### Single Cylinder



**7106PSS**  
Exterior View



**7106PSS**  
Interior View







## 001 Double Cylinder Deadlatch

### Features

- Conforms to the security and durability requirements of Australian Standard AS4145.2-2008 | SL7D8C6
- Cut-resistant Stainless Steel Bolt
- 11 concealed anchorage points and a door frame strengthener that combine to offer high security protection
- Hold back function that allows you to use the door in passage mode
- Patented LockAlert® and SafetyRelease™ functions

### Finishes

SP | CP | BRN | MBK\*

\* Nero Collection 001 Double Cylinder Deadlatch knob version available in Matt black. Refer to page 8.



001-1K1CPDP  
Interior View



001-1L1CPDP  
Interior View



Exterior View

## Deadlocks

### Features

- The 303 Single Cylinder Deadlock and 355 Double Cylinder Deadlock suits inward opening, and some sliding doors of 30-45mm thickness
- Both the 303 Single Cylinder Deadlock and 355 Double Cylinder Deadlock can be opened by key from outside and by turn knob from inside
- Suitable door types include: single hinged door, single sliding door, pair timber hinged doors and pair timber sliding doors. Glazed doors require minimum side rail.
- Conforms to Australian Standard AS4145.2-2008 SL7D8C6.

### Finishes

303 Single Cylinder Deadlock

NSP

355 Single Cylinder Deadlock

EVB | BRN | CP | NSP



303 Single  
Cylinder Deadlock



303-NSPDP  
Interior View

355 Single  
Cylinder Deadlock



355-NSPDP  
Interior View



Exterior View



## Paradigm® Pull Handle Lockset

### Features

- Conforms to the security and durability requirements of Australian Standard AS4145.2-2008 | SL8D8C6K5
- High security cut resistant Stainless Steel bolt/latch
- Door Magnets included to hold the door(s) in position when it is in passage mode (Deadbolt version only)
- Concealed screw fixings provide a neat and clean appearance

### Finishes

SSS



Exterior  
View



005/DPHSSS  
Interior  
Double Cylinder  
- Deadbolt



005/DPHSSS  
Interior  
Single Cylinder  
- Deadlatch



005/DPHSSS  
Exterior / Interior  
Dummy



## Entrance Handles

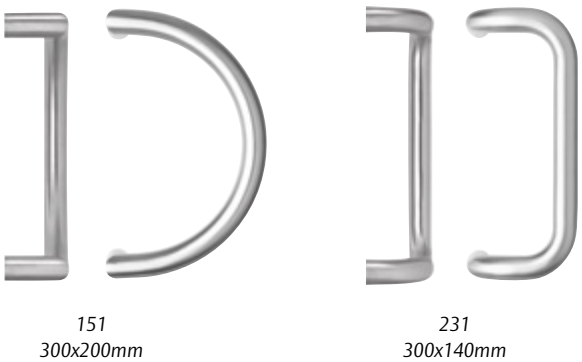
### Features

- Handles available in different sizes
- Constructed of 304 grade stainless steel, Lockwood Entrance Handles are suitable for use in external environments
- Suitable for both residential and commercial markets

### Finishes

SSS | MBK\*

\* Entrance handle series 141, 142, 143, 145 and 146 Styles are available in matt black and powder-coated finishes. Refer to page 11 for the selection.



\* Refer to page 23 for additional information on the Paradigm® Pull Handle Lockset





## Velocity® Large Rose Series Leversets

The Large Rose of 63mm is the ideal size for replacing existing handles, and covering paint lines on doors.



**VEL1/L1CP**  
*Summit® - L1*  
63mm Round Rose



**VEL1/L2CP**  
*Spire® - L2*  
63mm Round Rose



**VEL1/L3CP**  
*Element™ - L3*  
63mm Round Rose



**VEL1/L4CP**  
*Glide - L4*  
63mm Round Rose



**VEL1/28CP**  
*Hakea® - 28*  
63mm Round Rose



**VEL1/34CP**  
*Saltbush® - 34*  
63mm Round Rose

## Velocity® Series Leversets

### Features

- Velocity Large Rose Series is suitable for retrofit and common residential door preparations. The roses fit 50mm or 54mm diameter holes.
- Velocity Small Rose Series 55mm roses fit up to 45mm door preparations commonly used with mortice locks or latches.
- Velocity Small Rose Series is successfully tested up to 2 hours on fire door assemblies with the Australian Standard AS1905.1 2005 - Part 1: Fire Resistant Doorsets when used with Lockwood Synergy or Selector mortice locks
- Velocity Small Rose Series also includes range of escutcheons such as a AS1428.1 compliant turnknob, standard turnknob and privacy indicating emergency turn.

### Finishes

SC | CP | SP | MBK\*

\* Nero Collection levers available in Matt black.  
Refer to page 12 for selection.

**Large Rose Dimensions** 63mm by 12.5mm - Round Rose  
65mm by 12.5mm - Square Rose

**Small Rose Dimensions** 55mm by 12.5mm - Round Rose  
58mm by 12.5mm - Square Rose

Simple twist and tighten fixing method with pre-assembled lever set allows for super easy and fast installation







### Velocity® Small Rose Series Leversets

The Small Rose is designed primarily for new installations and is available in Round Rose of 55mm or Square Rose of 58mm.



**VSR1/L1CP**  
Summit® - L1  
55mm Round Rose



**VSR1/L2CP**  
Spire® - L2  
55mm Round Rose



**VSR1/L3CP**  
Element™ - L3  
55mm Round Rose



**VSR1/L4CP**  
Glide - L4  
55mm Round Rose



**VSR1/L8CP**  
Dianella™ - L8  
55mm Round Rose



**VSR1/L1CP + VSS1-TRIMCP**  
Summit® - L1  
58mm Square Rose



**VSR1/L2CP + VSS1-TRIMCP**  
Spire® - L2  
58mm Square Rose



**VSR1/L3CP + VSS1-TRIMCP**  
Element™ - L3  
58mm Square Rose



**VSR1/L4CP + VSS1-TRIMCP**  
Glide - L4  
58mm Square Rose

**NOTE:** Square trims sold separately.

### Symmetry Door Handle Range

#### Features

- Suitable for left or right handed doors
- Can be keyed alike to other Lockwood door locks
- Suited for use with Lockwood Symmetry Deadbolts
- Available in Passage, Privacy and Dummy versions

#### Finishes Knobsets\*

**EVB | PB | PSS | SSS**

#### Finishes Leversets\*

**CP | EVB | SC | PB**



#### Symmetry Knobsets



**7010PSS**  
Manor Entrance Knobset



**7012PSS**  
Manor Privacy Knobset



**7011PSS**  
Manor Passage Knobset



**7020PSS**  
Imperial Entrance Knobset



**7022PSS**  
Imperial Privacy Knobset



**7021PSS**  
Imperial Passage Knobset

#### Symmetry Leversets



**7540CP**  
District Entrance Leverset



**7542CP**  
District Privacy Leverset



**7541CP**  
District Passage Leverset



**7530CP**  
Vicinity Entrance Leverset



**7532CP**  
Vicinity Privacy Leverset



**7531CP**  
Vicinity Passage Leverset



**7550CP**  
Element Entrance Leverset



**7552CP**  
Element Privacy Leverset



**7551CP**  
Element Passage Leverset

\* Products are available in different finishes.  
Visit [lockweb.com.au](http://lockweb.com.au) for more information.





## Outland Sliding Door Track

### Features

- Easy to install, perfect for DIY installations
- High quality powder coat finish provides excellent durability
- Available in 2m and 3m track lengths
- Quiet operation with nylon bearing wheels

### Finishes

**MBK**



**OTL2000BLK**  
2m Track and Hardware Kit

**OTL3000BLK**  
3m Track and Hardware Kit

## Cavity Sliding Door Locks

### Features

- Fitted flush against the panel of the sliding door for full recess into the door cavity
- Easily fitted into a standard 54mm door preparation with a 60mm backset
- Retractable door pull for ease of use
- Australian standards compliance  
AS4145.2-2008: Tested to exceed 30,000 turn cycles withstanding 3 kN of pull force

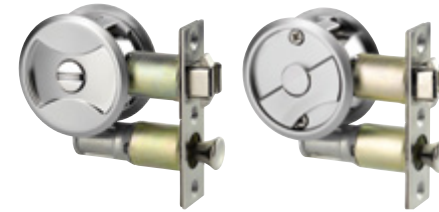
### Finishes

**SP | CP | MBK\***

\* Nero Collection Cavity Sliding Door Locks available in Matt black. Refer to page 17 for selection.



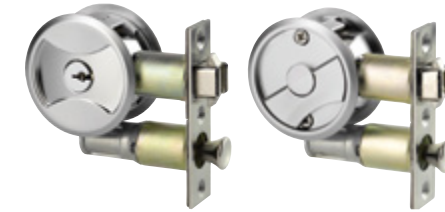
### Privacy Set



**7400SP**  
Exterior View

**7400SP**  
Interior View

### Entrance Set



**7444SP**  
Exterior View

**7444SP**  
Interior View

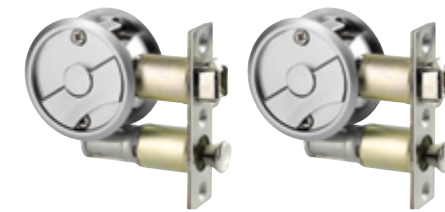
### Passage Set



**7450SP**  
Exterior View

**7450SP**  
Interior View

### Passage Latch Set



**7410SP**  
Exterior View

**7410SP**  
Interior View





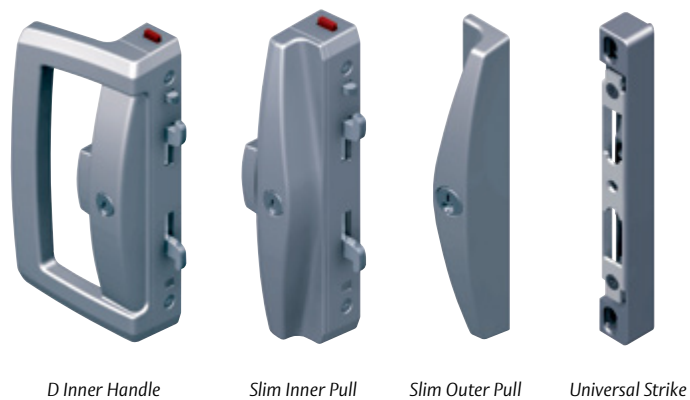
## Onyx Patio Sliding Door Lock

### Features

- Twin locking beaks for added security
- Door Close Detect button (DCD) anti slam feature protects locking beaks from accidental damage
- LockAlert® indicator shows lockset status at a glance
- DualSelect® enables two stage key locking
- Safety Release™ function minimises the risk of being locked in
- Ergonomic sliding snib with intuitive downward motion to unlock

### Finishes

BLK | SIL | SP | WH



**Product Range:** A wide selection of furniture options are available in the Onyx range to suit various sliding door applications. The range includes internal D handles and slim pulls and a variety of external furniture and strike options.

## Hinged & Sliding Security Screen Door Locks

### Features

- Designed to suit the standard 20mm hinged or sliding security door
- Both versions feature the unique DualSelect® functionality and are self-latching for improved home security
- Conforms to Australian Standard AS4145.2 2008, offering exceptional performance and reliability
- Lock from inside using snib
- Two keys available and can be keyed alike to other Lockwood door locks
- Suits left and right handed doors

### Finishes

8653 Sliding Security Screen Door Lock

BLK | PRM | WH

8654 Hinged Security Door Lock

BLK | BRN | CP  
EVB | GSP | MAG  
PRM | SP | STB  
WH | WHB



Inside



Inside

The 8653 Sliding Security Door Lock includes a **LockAlert®** indicator which shows the lock's status at a glance.



HIRE A LOCKIE







**Lockwood** is the leading brand in the Australian locking industry. With an established reputation for high quality products, this iconic brand provides a wide range of locking solutions to residential housing, commercial, semi-commercial, building and industrial application markets. Lockwood is supported by an extensive distribution and after-sales support network. Our customers include retailers, architects, trade and industrial personnel, locksmiths and security dealers.



#### The Lockwood 25 Year Mechanical Warranty

Our belief that we manufacture the finest premium products available in today's market place is backed by the Lockwood 25 Year Mechanical Warranty, ensuring that Lockwood continues to keep Australians safe by delivering security and peace of mind.

For warranty terms and conditions, please visit [www.lockweb.com.au](http://www.lockweb.com.au) or call 1300WARRANTY

**ASSA ABLOY** Group is the global leader in access solutions. Every day, we help billions of people experience a more open world.

ASSA ABLOY Opening Solutions leads the development within door openings and products for access solutions in homes, businesses and institutions. Our offering includes doors, door and window hardware, mechanical and smart locks, access control and service.

## Hydraulic Screen Door Closer

### Features

- Spring loaded piston in hydraulic unit for smooth closing
- Heavy duty, suits heavier screen doors, without being too strong for lighter doors
- Very high level of adjustability
- Closing speed easily hand adjustable, spinning entire cylinder
- Door hold-open feature
- Surface mounting
- Automatic latch operation

### Finishes

BLK | SIL | WH



**NOTE:** Length of closer is different to pneumatic closers; if replacing an older pneumatic closer, holes from original brackets will be in different locations.

**Disclaimer:** Whilst every effort has been made to ensure that the information (including product images and drawings) contained in this brochure is accurate at the time of publication, ASSA ABLOY Australia Pty Limited ("ASSA ABLOY") recommends that you consult ASSA ABLOY or its agents prior to placing an order to ascertain current information on specific products, as ASSA ABLOY reserves the right to make changes without notice. ASSA ABLOY will not be liable for any injury, loss or damage whatsoever, arising from any errors or omissions in the information contained in the brochure or arising from the use or application of the information contained herein. © 2021 copyright by ASSA ABLOY All rights reserved.

ASSA ABLOY Australia Pty Ltd ABN 90 086 451 907 ©2021\_07 \_AAA-CAT-041





**ASSA ABLOY**



**ASSA ABLOY Opening Solutions  
Australia (Head Office)**

**235 Huntingdale Road  
Oakleigh, Victoria, 3166 Australia**

**For customer feedback:**  
1300 LOCK UP (1300 562 587)  
[customerservice.au@assaabloy.com](mailto:customerservice.au@assaabloy.com)

[lockweb.com.au](http://lockweb.com.au)