

Makita®

18V Brushless 165mm Circular Saw

DHS680



BRUSHLESS

Product Objectives

- To expand the Makita 18V Range of Brushless tools with powerful market leading 165mm circular saws.
- To provide a powerful yet compact and lightweight saw, ideal for a wide range of industries and trades such as drywall, carpentry and many more.



Product Overview

Twin LED job light

Compact ergonomic design

Blower function

Ergonomically designed handle

Large bevel capacity

Dust extraction nozzle



BL
MOTOR

ADT



Product Specification Sheet



Max. cutting capacities at 0°	57mm
Max. cutting capacities at 45°	41mm
Max. cutting capacities at 50°	37mm
Bevel capacity	0° - 50°
Blade diameter	165mm (6-1/2")
Bore diameter	20mm
No load speed	5,000rpm
Overall length	350mm
Skin Weight	2.7kg
Weight (with battery)	3.3kg
Voltage	18V

- **Twin LED job light** – for improved visibility in low light environments.
- **Blower function** – helps to clear dust away from the cut line.
- **Large bevel capacity** – up to 50° bevel making it incredibly versatile for a wide range of cutting applications.
- **Brushless** – high efficiency Brushless Motor provides higher power and more work amount.
- **ADT (Automatic torque Drive Technology)** – automatically gives optimal rpm to torque ratio to produce the fastest cut in light or hard applications.
- **Compact ergonomic design** – adds manoeuvrability and control whilst reducing fatigue to the operator.
- **Ergonomically Designed Handle** – provides comfortable grip and more control while minimizing hand fatigue and pain.
- **Dust extraction nozzle** – for connection to dust extraction vacuum for a safer and cleaner work environment.
- **Electric brake** – quickly stops the blade rotation after the switch has been disengaged, increasing safety and minimizing risk.

Advantages

Compact



Compact & lightweight design with downsized motor and better placement of parts

Speed

ADT

ADT - reduces rpm and increase torque under load

Versatility



50° bevel capacity

Convenience



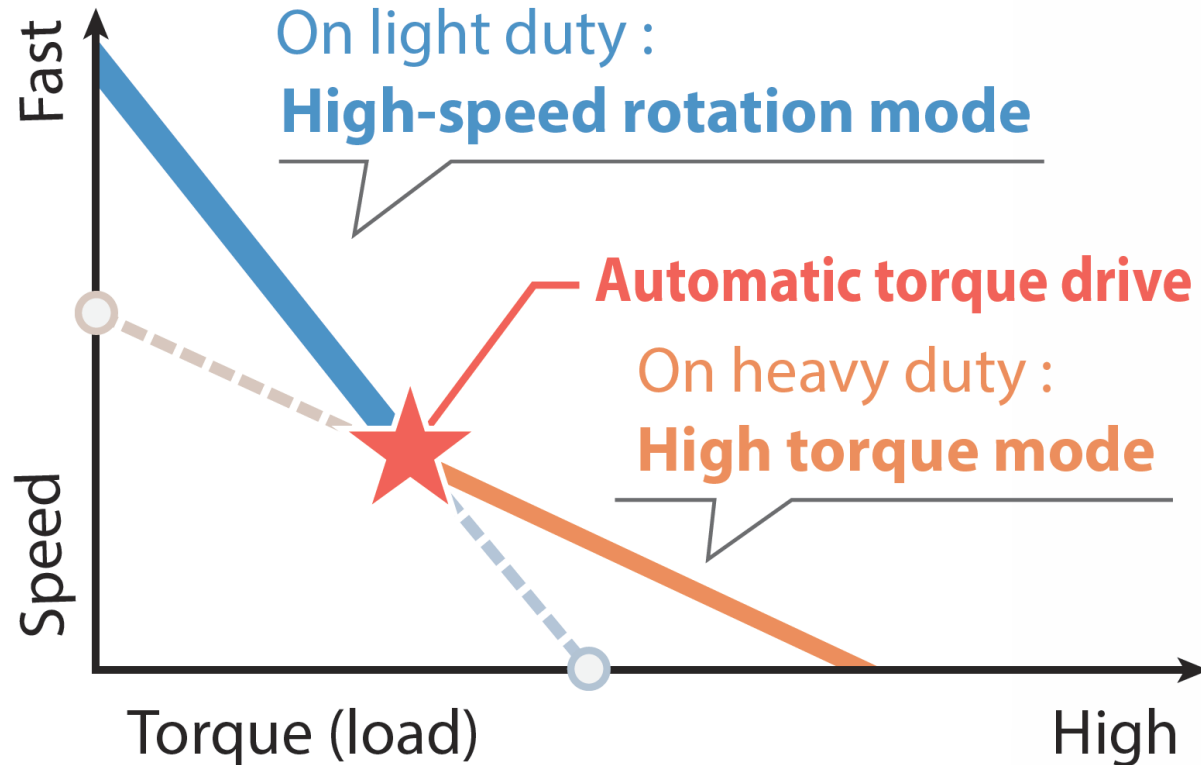
Blows dust from cut line + twin LED job light

Advantages

Maximum performance

Experience incredible performance in a compact chassis with the combination of a purpose built brushless motor that delivers a no load speed 5,000rpm and Automatic torque Drive Technology (ADT).

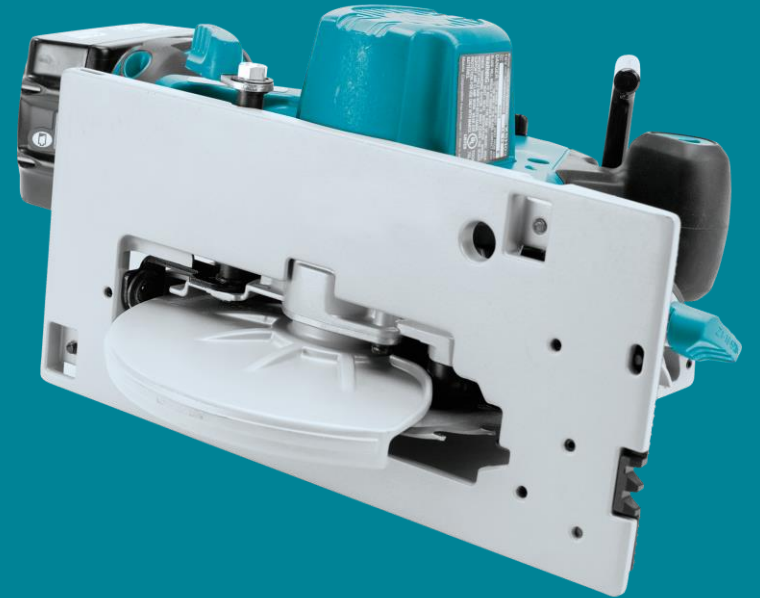
ADT



Advantages

Compact & Lightweight Design

The DHS680 design delivers superior ergonomics with a lighter and more compact design for improved manoeuvrability. The lightweight design is also achieved by using durable but light magnesium die-cast for the base, blade case and the safety cover.







Our Range

	DHS661	DHS660	DHS680	DSS610	DSS611
					
	BRUSHLESS	BRUSHLESS	BRUSHLESS		
Motor design	Brushless	Brushless	Brushless	Brushed	Brushed
Blade diameter	165mm (6-1/2")	165mm (6-1/2")	165mm (6-1/2")	165mm (6-1/2")	165mm (6-1/2")
Blade Position	Right side	Right side	Left side	Left side	Left side
Bevel Capacity	50°	50°	50°	50°	50°
No load speed	5,000rpm	5,000rpm	5,000rpm	3,700rpm	3,700rpm
Overall length	270mm	270mm	350mm	347mm	347mm
Skin weight	2.53kg	2.53kg	2.63kg	2.53kg	2.43kg
Voltage	18V	18V	18V	18V	18V
Electric Brake	Yes	Yes	Yes	Yes	No
Automatic Torque Drive	Yes	Yes	Yes	No	No
Auto-start Wireless System	Yes	No	No	No	No

Accessories

Standard Accessories

	B-62991	Efficut 165mm 25T Blade
	783203-8	Hex wrench
	196952-2	Dust extraction Adaptor
	164095-8	Guide Rule

Optional Accessories

	B-62991 B-57358	Efficut 165mm 25T Blade Efficut 165mm 56T Blade
	199231-7	Tool hanger
	199232-5	Guide rail adapter set
	194368-5 194925-9 194367-7	1400mm Guide rail track 1900mm Guide rail track 3000mm Guide rail track

Extraction System

	Dust Extraction Attachment	Applicable Cuffs		Hose	Vacuum
	 196952-2	 195548-6	<div>  195545-2 </div> <div>  195547-8 </div>	 28mm diameter hose	DVC864L DVC862L DVC860L DVC750LX1 DVC265 DVC261 DVC260 VC2510LX1 VC3210LX1
		 P-70378		 32mm Quick Fit Hose	VC3012L VC3012M VC4210L VC4210M
		 P-81745		 32mm diameter	VC2012L