

4 Shelf 2 Drawer Unit

**ASSEMBLY INSTRUCTIONS**

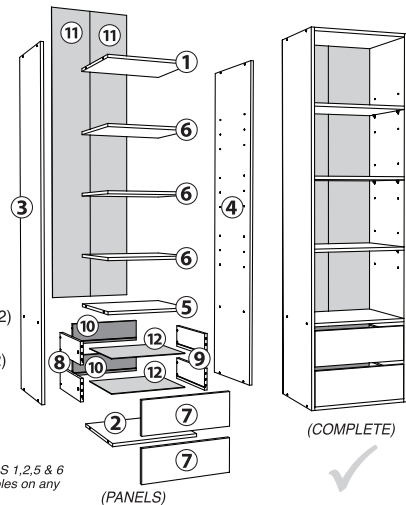
• ASSEMBLE ON A LEVEL, CLEAN SURFACE •  
• TWO PERSON ASSEMBLY RECOMMENDED •

PAGE 1



**PANELS:**

- 1 - TOP PANEL
- 2 - BASE PANEL
- 3 - LEFT SIDE
- 4 - RIGHT SIDE
- 5 - DRAWER SHELF
- 6 - SHELVES (x3)
- 7 - DRAWER FRONT (x2)
- 8 - DRAWER LEFT (x2)
- 9 - DRAWER RIGHT (x2)
- 10 - DRAWER BACK (x2)
- 11 - BACKBOARD (x2)
- 12 - DRAWER BASE (x2)



*Note:*  
The difference between PANELS 1, 2, 5 & 6 is that PANEL 6 (x3) has NO holes on any side edges.

**LIST OF PARTS:**

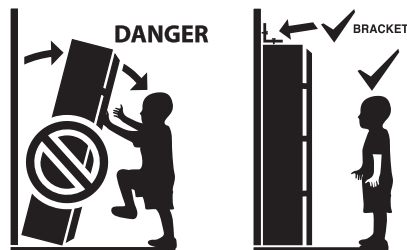
ID	DIAGRAM / DESCRIPTION	Qty
A	MINIFIX	4
B	CAM LOCK	4
C	WOOD DOWEL	8
D	UNITAR SCREW	12
E	M3.5 SCREW (14mm)	16
F	M4 SCREW (40mm)	8
G	DRAWER SLIDE (CR) x2 DRAWER SLIDE (DR) x2 DRAWER SLIDE (CL) x2 DRAWER SLIDE (DL) x2	8 TOTAL PAIRS
H	ADJUSTABLE SHELF SUPPORT	12
I	NAIL	30
J	NAIL LEG STUD	4
K	ALLEN KEY 'Z'	1
L	UNITAR SCREW CAPS	12
M	ANTI-TIP BRACKET SET	1 SET

**WHITE MATT FINISH**

1800mm H | 500mm W | 410mm D

**CARE CAUTION:** TO CLEAN PARTICLE BOARD WITH MELAMINE FINISH, PLEASE CLEAN WITH A SOFT, DRY CLOTH. DO NOT USE CHEMICALS OR DETERGENTS AND AVOID WATER AND DIRECT SUNLIGHT.

**WARNING: Tip-over hazard.**



**WARNING:** It is **STRONGLY RECOMMENDED** that you **ANCHOR** this product by installing the **ANTI-TIP BRACKET** and **SCREWS** (Step 7) and **ATTACHING** the *Faulkner 4 Shelf 2 Drawer Unit* to a **SOLID, FLAT WALL**.

**DANGER: TOPPLING FURNITURE CAN CAUSE SERIOUS INJURIES AND DEATH.**

**IMPORTANT:** Regularly check that Anti-Tip Bracket and Screws are securely maintained. Stability of tall items may be affected by thick carpets and uneven floors, or uneven and unstable walls.

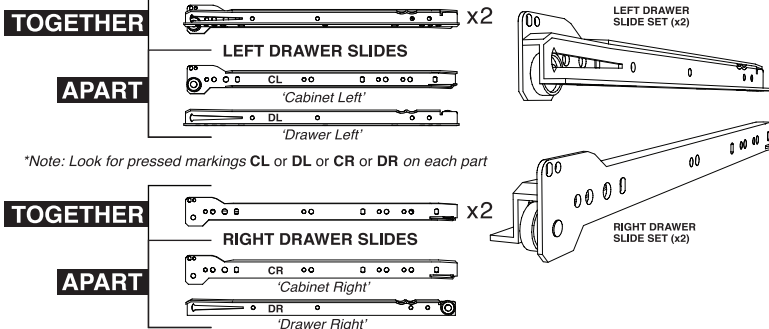
**SAFETY:** Carefully check for any electrical wires or plumbing inside the wall before drilling any holes (If unsure, contact a qualified Tradesman).

Walls are constructed from different materials (i.e: Masonry = Solid Wall, Plasterboard = Hollow Wall) so it is important to use appropriate wall fixings and screws for your wall type. Your local Hardware Store will stock the necessary extra screws, drill bits and fixings, and can offer suitable advice if needed. **DO NOT** place TV Sets or other heavy objects on top of this Unit. **DO NOT** overload the shelves of this Unit. **NEVER** allow children or adults to climb or hang on this Unit.

**ASSEMBLY:**

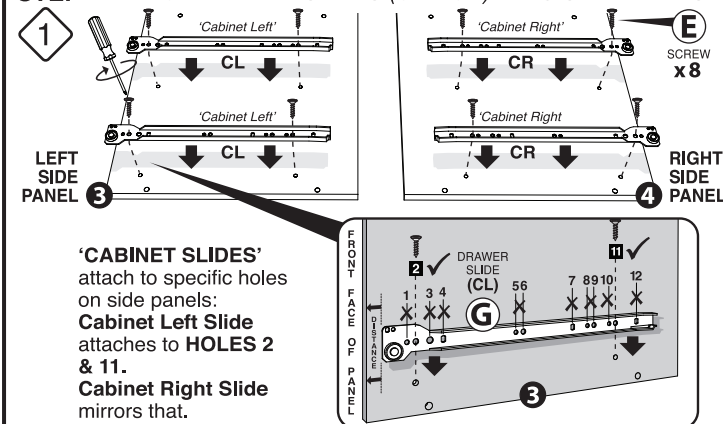
**! UNDERSTANDING THE DRAWER SLIDES G x 8**

IDENTIFYING THE PARTS



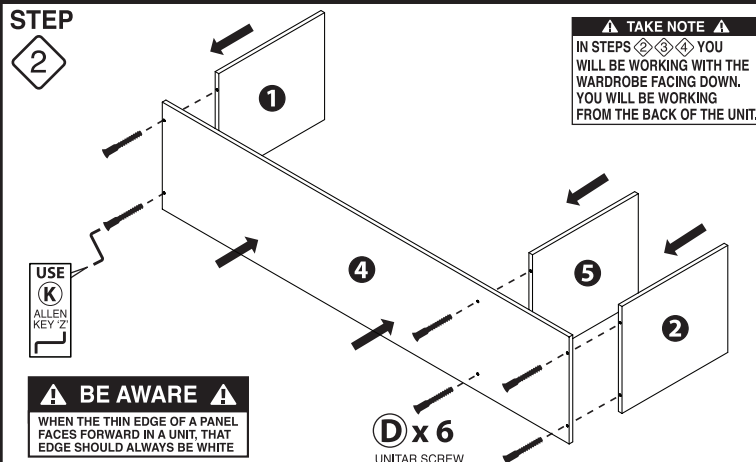
*\*Note: Look for pressed markings CL or DL or CR or DR on each part*

**STEP 1 ATTACH DRAWER SLIDES (CL & CR) x2 TO SIDE PANELS**



**'CABINET SLIDES'** attach to specific holes on side panels:  
**Cabinet Left Slide** attaches to HOLES 2 & 11.  
**Cabinet Right Slide** mirrors that.

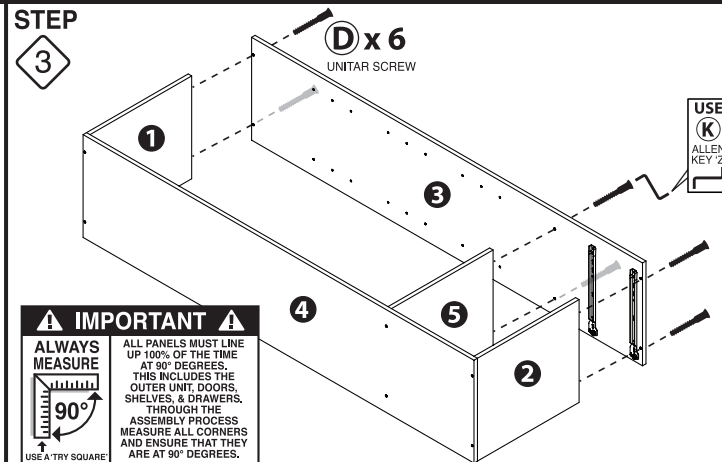
**STEP 2**



**TAKE NOTE**  
IN STEPS 2, 3, 4 YOU WILL BE WORKING WITH THE WARDROBE FACING DOWN. YOU WILL BE WORKING FROM THE BACK OF THE UNIT.

**BE AWARE**  
WHEN THE THIN EDGE OF A PANEL FACES FORWARD IN A UNIT, THAT EDGE SHOULD ALWAYS BE WHITE

**STEP 3**



**IMPORTANT**  
**ALWAYS MEASURE**  
ALL PANELS MUST LINE UP 100% OF THE TIME AT 90 DEGREES. THIS INCLUDES THE OUTER UNIT, DOORS, SHELVES, & DRAWERS. THROUGH THE ASSEMBLY PROCESS MEASURE ALL CORNERS AND ENSURE THAT THEY ARE AT 90 DEGREES.

4 Shelf 2 Drawer Unit

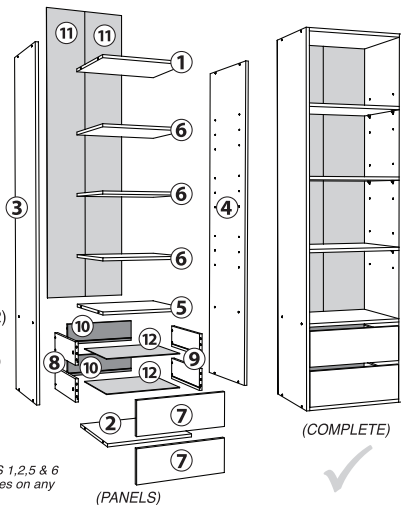
**ASSEMBLY INSTRUCTIONS**

- ASSEMBLE ON A LEVEL, CLEAN SURFACE •
- TWO PERSON ASSEMBLY RECOMMENDED •



**PANELS:**

- 1 - TOP PANEL
- 2 - BASE PANEL
- 3 - LEFT SIDE
- 4 - RIGHT SIDE
- 5 - DRAWER SHELF
- 6 - SHELVES (x3)
- 7 - DRAWER FRONT (x2)
- 8 - DRAWER LEFT (x2)
- 9 - DRAWER RIGHT (x2)
- 10 - DRAWER BACK (x2)
- 11 - BACKBOARD (x2)
- 12 - DRAWER BASE (x2)



**Note:**  
The difference between PANELS 1, 2, 5 & 6 is that PANEL 6 (x3) has NO holes on any side edges.

**LIST OF PARTS:**

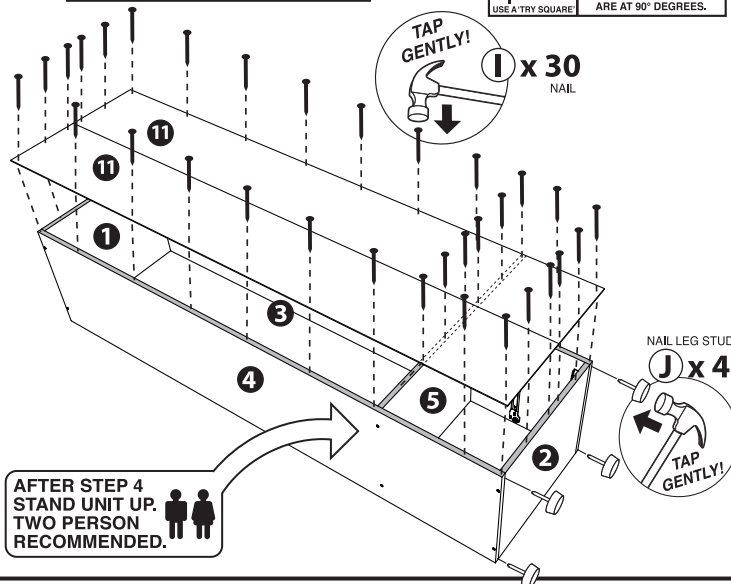
ID	DIAGRAM / DESCRIPTION	Qty
A	MINIFIX	4
B	CAM LOCK	4
C	WOOD DOWEL	8
D	UNITAR SCREW	12
E	M3.5 SCREW (14mm)	16
F	M4 SCREW (40mm)	8
G	DRAWER SLIDE (CR) x2 DRAWER SLIDE (DR) x2 DRAWER SLIDE (CL) x2 DRAWER SLIDE (DL) x2	8 TOTAL RAILS
H	ADJUSTABLE SHELF SUPPORT	12
I	NAIL	30
J	NAIL LEG STUD	4
K	ALLEN KEY 'Z'	1
L	UNITAR SCREW CAPS	12
M	ANTI-TIP BRACKET SET	1 SET

**ASSEMBLY: (cont)**

**STEP 4**

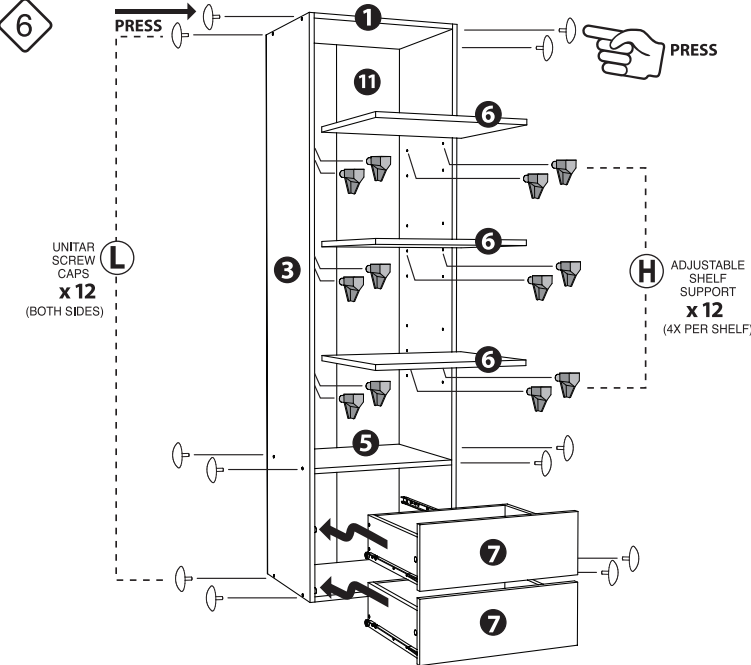
**CAUTION**  
DO NOT ATTEMPT TO FIX THE BACKBOARDS (11) TO THE BACK OF THIS UNIT UNLESS YOU HAVE CHECKED THAT ALL OUTER UNIT CORNERS ARE SQUARE AND AT 90° DEGREES. TAKE MEASUREMENTS, USE A SPIRIT LEVEL, OR A 'TRY SQUARE' TO CONFIRM THAT THE UNIT IS SQUARE AND READY FOR FIXING THE BACKBOARDS (11) TO IT.

**IMPORTANT**  
ALWAYS MEASURE  
90°  
USE A TRY SQUARE  
ALL PANELS MUST LINE UP 100% OF THE TIME AT 90° DEGREES. THIS INCLUDES THE OUTER UNIT, DOORS, SHELVES, & DRAWERS. THROUGH THE ASSEMBLY PROCESS MEASURE ALL CORNERS AND ENSURE THAT THEY ARE AT 90° DEGREES.

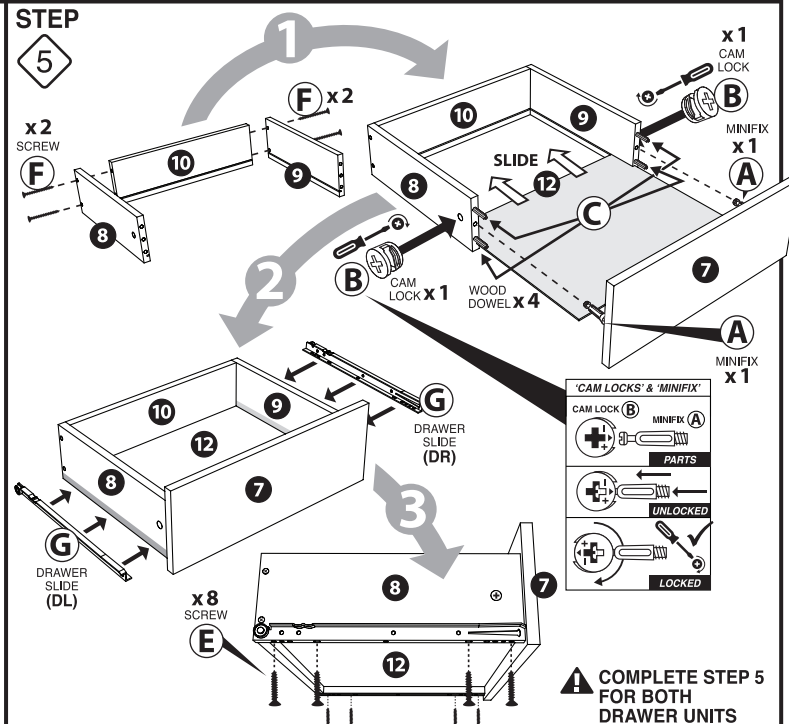


AFTER STEP 4 STAND UNIT UP. TWO PERSON RECOMMENDED.

**STEP 6**



**STEP 5**



**COMPLETE STEP 5 FOR BOTH DRAWER UNITS**

**STEP 7**

