

LYSAGHT

COASTAL STYLE

COASTLINE COOL



INSPIRATION TO BUILD BETTER

CHARACTERISTICS OF COASTAL HOUSES

Australian coastal style has undergone a significant transformation from the days of simple beach shacks, evolving into a luxurious design movement that draws inspiration from its seaside location. This architectural style remains deeply rooted in a laid-back lifestyle, reflecting the beauty and tranquility of coastal living.

Coastal houses, especially those in proximity to the ocean, face the challenge of saltwater weathering. Properties within 10km of 'breaking surf' must adhere to the requirements set down by the National Construction Code to protect against corrosion. As a response to these coastal conditions, the style emphasises the use of low-maintenance materials that can withstand the harsh coastal environment.

A prominent feature of coastal houses is their location-inspired colour palette. Neutral tones reflective of the sand, sea, and sky dominate, creating a harmonious connection with the natural surroundings. The design itself is geared towards creating a seamless integration with nature, employing open floor plans and large windows to capture scenic views and maximise the influx of natural light.

These features collectively define the characteristics of coastal houses, showcasing a balance between aesthetic appeal and the necessity for durability in the face of coastal elements.



LYSAGHT® & CUSTOM ORB®

HELPING DEFINE AUSTRALIA'S
COASTAL STYLE

Lysaght products have shaped Australian architecture for over 150 years with its famous corrugated steel sheets playing a major role in the design of our homes. This product, now known as CUSTOM ORB®, has been used on many classic Australian structures, from homesteads and stables, to the outdoor dunny and our iconic water tanks.

Loved by architects for its versatility, CUSTOM ORB® corrugated cladding complements any contemporary design with its clean lines and classic shape.

Most importantly, all LYSAGHT® products are manufactured in Australia and are exclusively made from COLORBOND® steel and ZINCALUME® steel, so you know the products are tested and proven in Australian conditions.



The innovation that helped shape our country's unique architectural style, CUSTOM ORB® corrugated steel, is part of the fabric of Australia with a legacy of over 150 years.



LYSAGHT – SHAPERS OF COLORBOND® STEEL

COLORBOND® steel is Australian-made pre-painted steel that's supplied to Lysaght in large coils. Lysaght then shapes the COLORBOND® steel (through the process known as rollforming) into our range of roofing and walling products, gutters, fascia and downpipes, fencing systems, plus home improvement products such as verandahs, patios and carports.

Colorbond®

COASTAL STYLE



The coastal architectural style home, or “beach house style,” embodies the relaxed and breezy atmosphere of coastal living. This design aesthetic draws inspiration from beach-front and seaside settings, capturing the essence of the ocean, sand, and sky. Coastal style homes are characterised by light and airy interiors, with a palette of soft blues, sandy neutrals, and white, evoking the ocean and shore.



Coastal style may feature distinct design elements tailored to withstand coastal challenges and celebrate the beauty of waterfront living. Pitched or gabled roofs to efficiently shed wind and rain, while open floor plans and large windows maximise natural light and scenic views.

These homes often have outdoor living spaces, such as decks and balconies, for enjoying the sea breeze. Coastal architectural style combines practicality with aesthetics, creating a unique and inviting retreat that captures the essence of coastal living.

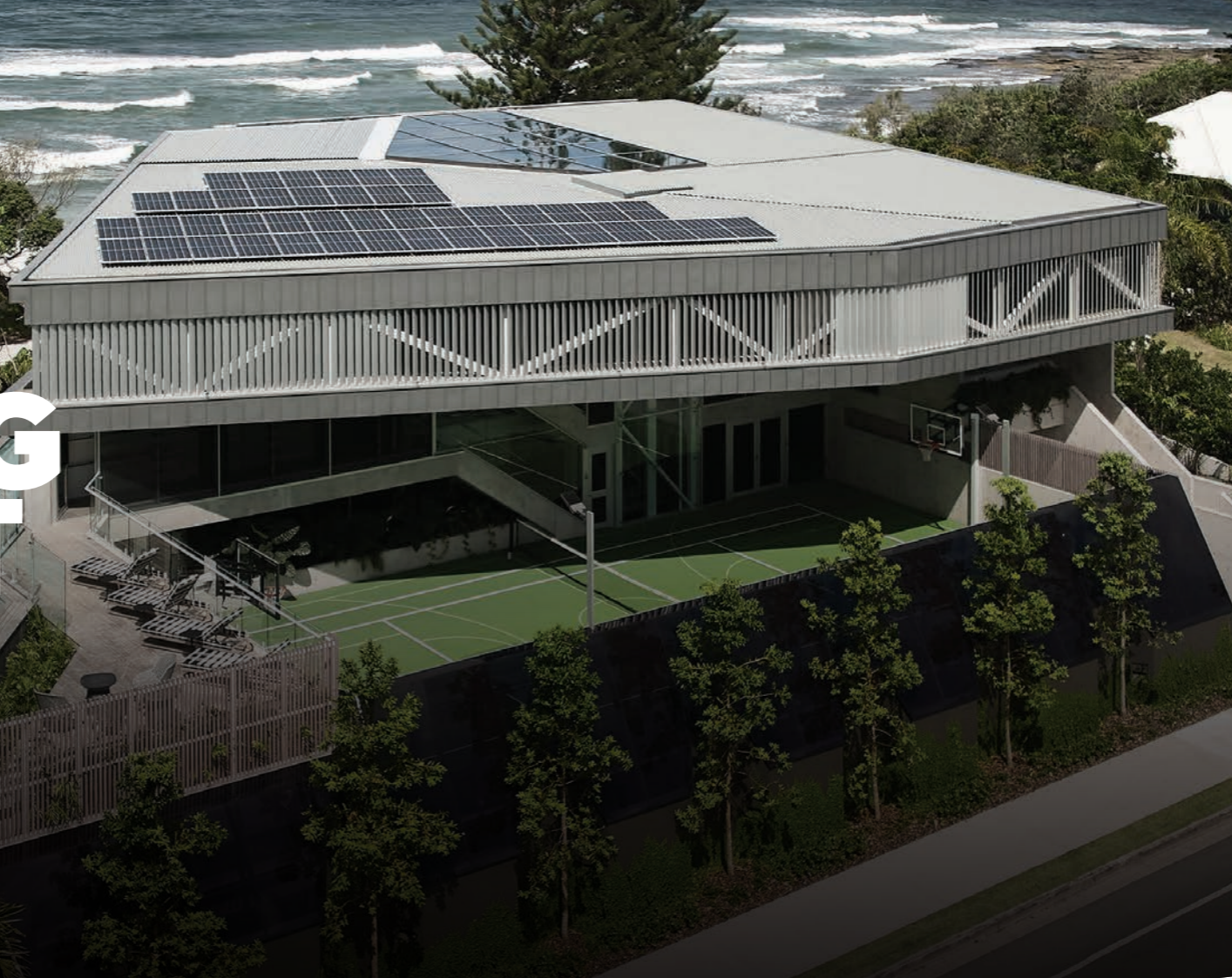
TYPICAL CHARACTERISTICS OF A COASTAL STYLED HOME:

- Open floor plans that maximise natural light and ventilation
- Outdoor living with spacious decks, balconies, or patios
- Tough materials that can withstand saltwater, strong winds, and potential storm damage
- Light colours and reflective surfaces to mitigate heat absorption and create a bright, airy interior
- Metal pitched or gabled roofs to efficiently shed wind and rain
- Large windows and sliding doors are common to embrace views and take advantage of cooling breezes

CHOOSING THE RIGHT PRODUCT

Avoiding corrosion is the biggest challenge when building in coastal environments. Choosing the right materials to protect the integrity of the build and ensuring the home looks beautiful for years to come is critical.

While LYSAGHT® roofing, walling and guttering shaped from COLORBOND® steel will meet the performance needs of homes built in most locations, more demanding coastal environments require materials with a greater level of corrosion protection.



For coastal applications Lysaght recommends roofing, walling and guttering shaped from the following three material choices:

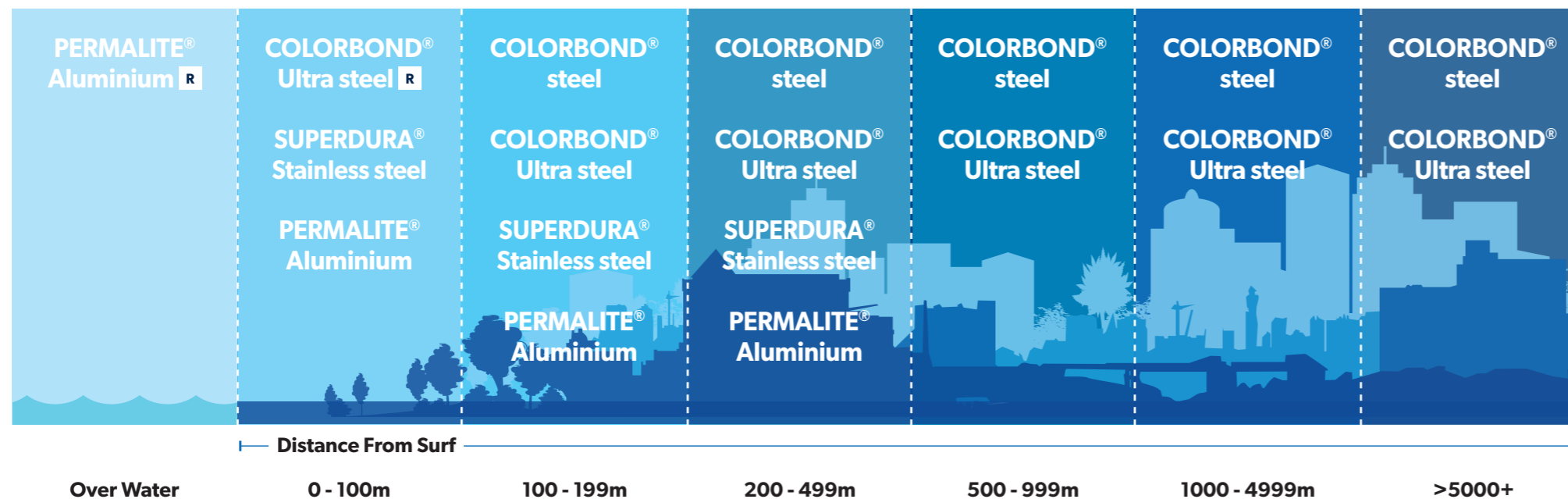
- **COLORBOND Ultra® steel** - Developed primarily for coastal environments, COLORBOND® Ultra steel's specially formulated combination of protective coatings makes it one of the most cost effective, corrosion resistant materials available.
- **SUPERDURA® Stainless steel** - SUPERDURA® Stainless steel is BlueScope's ultimate pre-painted steel product for corrosion resistance. With a stainless steel substrate, SUPERDURA® Stainless steel is suitable those very severe coastal environments located 0 to 100m from breaking surf.
- **PERMALITE® aluminium** - With a specially developed marine-grade aluminium base PERMALITE® is recommended as the lightweight alternative to other roofing and walling products in severe marine environment

THE LYSAGHT SOLUTION

No matter how close you build to the sea, Lysaght has the materials to help you create your dream coastal home. With over 100 years of local manufacturing, all LYSAGHT® products are extensively performance tested, backed with the strength of the BlueScope warranty, and can be relied on with total and absolute confidence.

Benefits of using LYSAGHT® products:

- Proven in all environments over past 100 years
- Backed by BlueScope
- Technical support from the manufacturer
- All products comply with the National Construction Code

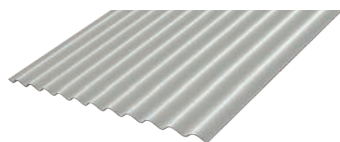


Legend **R** Roofing only

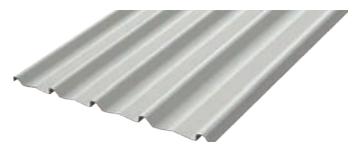
COASTAL ROOFING & WALLING PROFILES

The LYSAGHT® roofing range includes Coastal inspired options available in either unpainted or pre-painted COLORBOND® steel finishes to suit every project.

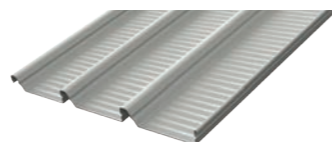
ROOFING AND WALLING



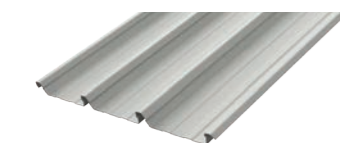
CUSTOM ORB®
Classic, versatile corrugated roofing or walling.



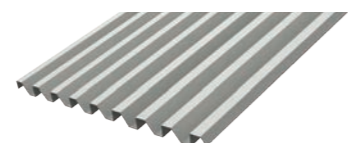
TRIMDEK®
Versatile rib and pan style roofing or walling.



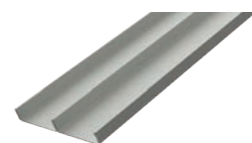
KLIP-LOK 700 HI-STRENGTH®
Clip fixed steel roofing or walling for supreme watertightness.



KLIP-LOK 700 CLASSIC®
Clip fixed steel roofing or walling for supreme watertightness.



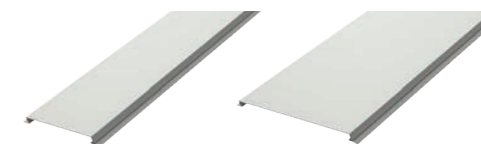
SPANDEK®
Modern, square-corrugated roofing or walling.



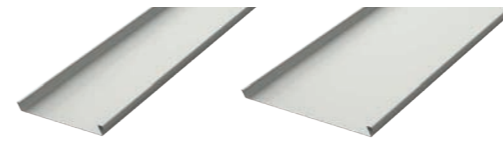
LONGLINE 305®
Steel roofing or walling featuring tall, slender ribs and broad, flat pans.



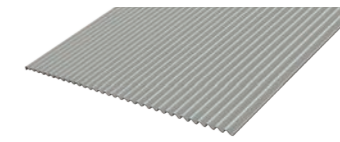
ENSEAM®
Nailstrip-style roofing or walling featuring a striking linear aesthetic.



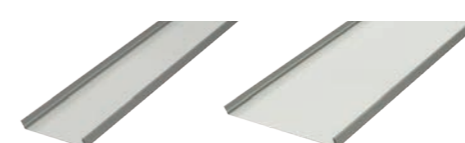
DOMINION®
Interlocking panel style steel walling featuring recessed joints.



IMPERIAL™
High performance standing seam roofing or walling, capable of curving.



MINI ORB®
Mini-corrugated steel walling cladding also suitable for soffits, ceilings and eaves lining.



SNAPSEAM®
Clip-fixed nailstrip-style steel roofing or walling featuring a clean linear appearance.



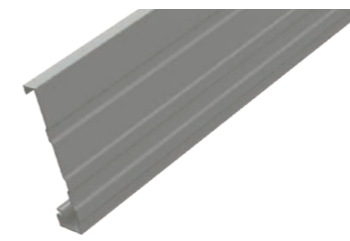
PANELRIB®
Lightly fluted steel wall, soffit, ceiling and eaves lining profile.



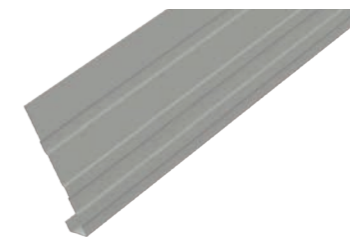
COMPLETE THE LOOK

Lysaght supplies a large range of traditional style rainwater goods including gutters, downpipes and rainheads specifically suited to Coastal projects. These products are important details that will either need to blend in or contrast to your roofing or brickwork. LYSAGHT® rainwater goods are available in either a range of pre-painted COLORBOND® steel finishes or unpainted to allow you to create your own unique coastal styling.

FASCIA

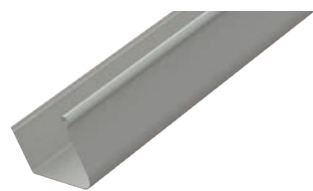


NOVALINE® FASCIA SYSTEM

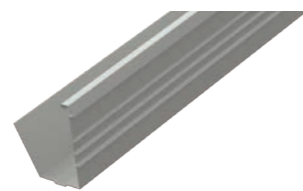


NOVALINE® FASCIA COVER

GUTTER STYLES



QUAD 115 HI-FRONT



RANCELINE® GUTTER



SHORELINE® GUTTER



HALF ROUND GUTTER 150mm

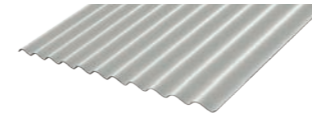


FLAT BACK GUTTER 150mm



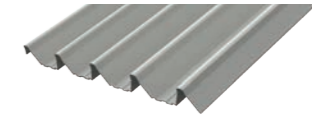
ROOFING SHAPED FROM PERMALITE[®] ALUMINIUM

For use in marine and other challenging environments, PERMALITE[®] aluminium is a long lasting, durable, lightweight alternative to other roofing materials, unique in its ability to remain corrosion free with minimal maintenance.



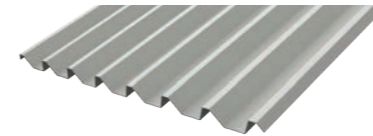
WAVELINE[®]

With its iconic corrugated shape combined with all the durability benefits of aluminium, WAVELINE[®] is a smart choice for coastal properties seeking a classic look with the durability benefits of aluminium.



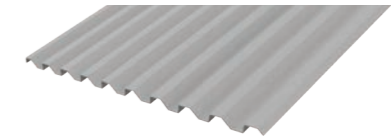
ALSPAN[®]

Manufactured from marine-grade aluminium for durability, ALSPAN[®] offers a wide spanning capability, a high rainwater carrying capacity and can accommodate foot traffic without damage.



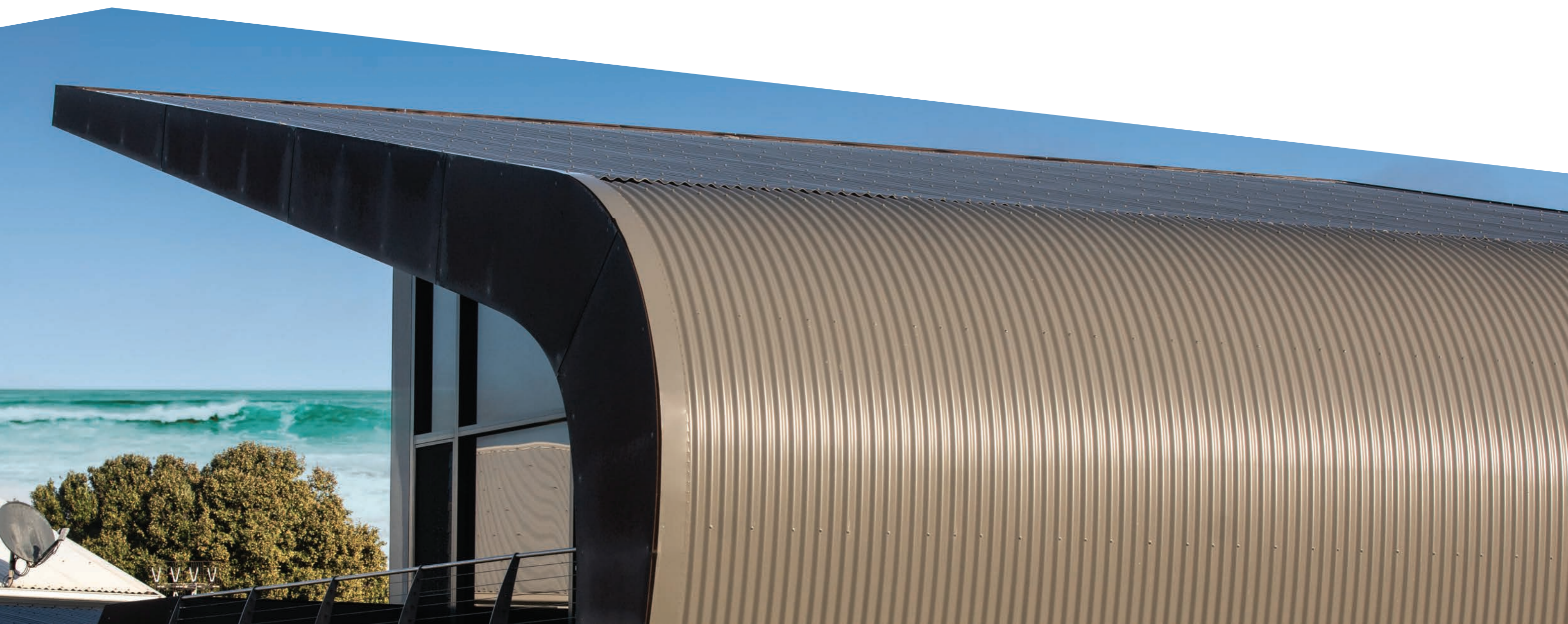
LT7[®]

Due to its strength, rainwater-carrying capacity, and fixing economy, LT7[®] is a versatile and flexible aluminium roof profile.



V-RIB[®]

Featuring a neat, balanced appearance, the ability to be installed quickly and a large cover width, V-RIB[®] is the efficient roofing or walling option for many projects.



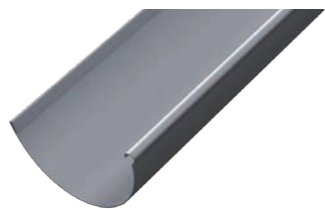
FIXINGS, ACCESSORIES, RAINWATER GOODS AND FLASHINGS FOR PERMALITE[®] ALUMINIUM

Lysaght also offer a comprehensive range of aluminium gutters, downpipes, flashings and cappings, to complement the PERMALITE[®] roofing profiles.



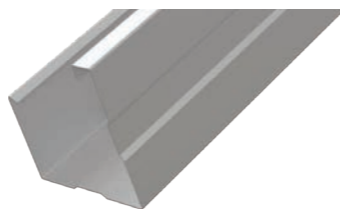
QUAD

Classic shaped steel gutters adaptable to both modern and older style houses, patios, carports, and sheds.



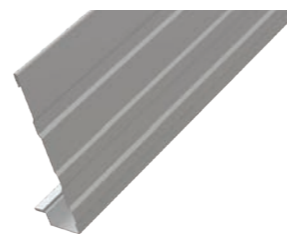
HALF ROUND

Curved-base aluminium gutters suitable for modern style houses and commercial buildings.



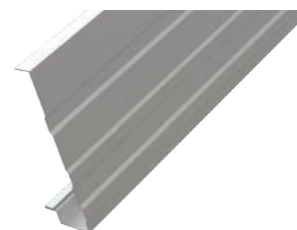
M STYLE

Square-fronted aluminium guttering suitable for houses, patios, carports and sheds.



ALLULINE[™] FASCIA

Aluminium fascia system compatible with an extensive range of PERMALITE[®] gutters.



ALLULINE[™] FASCIA COVER

Marine grade aluminium fascia cover suitable for covering warped, discoloured, or peeling timber fascia.



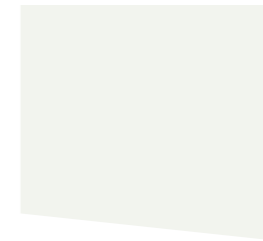
COLOUR THE COASTAL WAY



The colour palette of coastal style homes relies on a serene combination of whites, neutral tones, and greys. Crisp white exteriors evoke the sun-bleached essence of coastal cottages, radiating a timeless elegance and a clean, airy ambiance. Neutral tones such as sandy beige and soft grey establish a harmonious backdrop, reflecting the tranquility of the surrounding coastal landscape.

These shades create a sense of balance and provide the perfect canvas for the serene and sophisticated character of coastal living. The inclusion of bolder greys in the palette further adds a touch of coastal authenticity, suggesting weathered driftwood and creating a soothing and welcoming coastal retreat.

COLORBOND® STEEL COASTAL COLOURS



Dover White™
SA = 0.28. BCA = L



Surfmist®
SA = 0.33. BCA = L



Southerly®
SA = 0.40. BCA = L



Shale Grey™
SA = 0.44. BCA = M



Bluegum®
SA = 0.57. BCA = M



Windspray®
SA = 0.60. BCA = M



Basalt®
SA = 0.67. BCA = D



Dune®
SA = 0.48. BCA = M

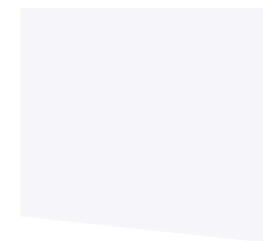


Ironstone®
SA = 0.73. BCA = D

Colorbond®

PERMALITE® ALUMINIUM COLOURS

PERMALITE® aluminium building products are also available in a colour palette to suit coastal styling. With a range that encompasses modern neutrals as well as bold shades, there is a selection of colours that can seamlessly integrate into any architectural design.



Glacier White™



Gull Grey™



Sahara®



Enduro Green®



Slate Grey™



Moon Shadow®



Obelisk Grey®

permalite

WHY LYSAGHT ONLY USES AUSTRALIAN COLORBOND® STEEL

COLORBOND® steel has been made in Australia since 1966 by BlueScope – Australia's largest steelmaker and a global leader in the manufacture of pre-painted steel.

Decades of Australian research and development have gone into creating a range of technologies that give genuine COLORBOND® steel its long lasting performance in Australia's harsh climate.

Renowned for its quality finish and durability, and backed by a material warranty¹ from BlueScope, COLORBOND® steel is one of Australia's most trusted building materials.

Colorbond®

SUSTAINABILITY

At Lysaght, we manufacture our LYSAGHT® steel building products range from 100% Australian-made metallic coated and pre-painted steel. These ingredient steel products are durable and resilient to Australia's harsh climate and their long life helps conserve resources and energy that may otherwise be invested in products with a shorter life span.

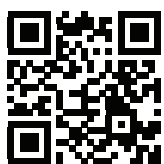
All LYSAGHT® steel building products contain recycled content and the steel in LYSAGHT® products is 100% recyclable. In some cases it can be reused without reprocessing, again saving on energy and resource use.

THERMAL EFFICIENCY

Many people know that the colour of your roof can make a difference to your cooling bill and no less than five of the colours in the COLORBOND® steel range qualify as solar reflective (light coloured) roofing under the Green Star Communities tool. But there's another way that COLORBOND® steel can help make your home more energy efficient. Every colour (except Night Sky®) in the standard COLORBOND® steel range features Thermatech® solar reflectance technology. Thermatech® technology is designed to reflect more of the sun's heat on hot, sunny days, which can mean less dependence on air-conditioning, plus reduced heat stress for your roof. The LYSAGHT® product range is available in the full range of COLORBOND® steel colours.

CORSTRIP® PROTECTIVE PLASTIC FILM

Some LYSAGHT® products shaped from COLORBOND® steel are delivered with a plastic film called CORSTRIP® to protect the product from damage during transport and installation. CORSTRIP® is made from 100% low-density polyethylene (LDPE) and is suitable for recycling.



Scan the QR code to access more design inspiration and product information on [lysaght.com](https://www.lysaght.com)

LYSAGHT.COM

FOR SALES ENQUIRIES CALL 13 30 38

FOR TECHNICAL ENQUIRIES CALL 1800 641 417

Not all LYSAGHT® products are available in all materials, finishes and colours shown. Material, finish and colour availability is indicative only and is subject to change without notice – contact Lysaght, your reseller, builder, or installer for more information.

The colour swatches shown have been reproduced to represent actual product colours as accurately as possible. However, we recommend checking your chosen colour against an actual sample of the product before purchasing, as varying light conditions and limitations of the printing process may affect colour tones and finishes. Images are indicative only. Actual product supplied may vary from images shown. Products shown may not be available in all regions - visit [lysaght.com](https://www.lysaght.com) for more information.

¹Warranties are subject to exclusions, application and eligibility criteria. For full terms and conditions and to determine the eligibility of your product for the warranty visit [bluescopesteel.com.au/warranties](https://www.bluescopesteel.com.au/warranties) or contact BlueScope on 1800 800 789. Warranties provided by BlueScope do not affect consumer rights under the Australian Consumer Law.

COLORBOND®, ZINCALUME®, Thermatech®, CORSTRIP®, LYSAGHT® and ® colour and product names are registered trademarks of BlueScope Steel Limited and ™ colour and product names are trademarks of BlueScope Steel Limited. © 2023 BlueScope Steel Limited. ABN 16 000 011 058. All rights reserved. LYH1824 – 12/23

INSPIRATION TO BUILD BETTER

LYSAGHT